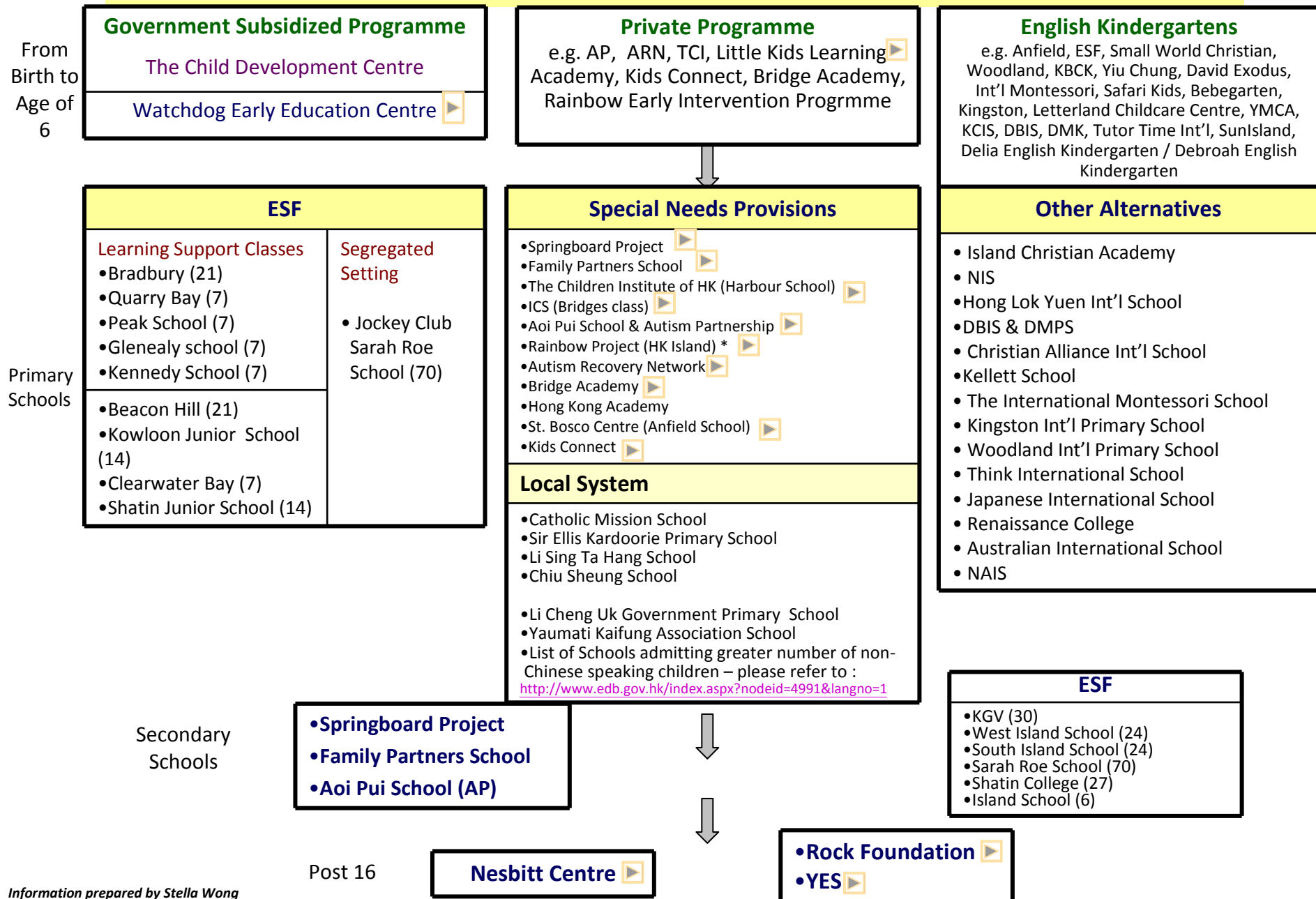


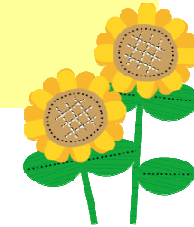
# Overview of Existing Services for the English Speaking Children with Special Needs





**CHILD  
DEVELOPMENT  
CENTRE**  
明德兒童啟育中心

# Child Development Centre



Since 1976  
1st integrated preschool in HK  
Chinese and English programme currently

<b>Government subsidized programme:</b>		
Early Intervention Group Programmes	(1 day/week) for 1 hr 30 mins each	\$1100/month (weekday class) \$1500/month (Saturday class) Extra session: \$750/month
<b>Private programme :</b>		
Tigers	(4 days/week) for 2 hr 30 mins each	\$8700/month
Giraffes (includes ST, OT, PT)	(4 days/week) for 1 hr 30 mins each	\$5200/month
Teddy Bears (includes ST, OT, PT)	(twice/week) for 2 hrs each	\$5500/month
Social Stars (English)	(1 session/week) for 1 hr 30 mins each	\$1450/month (weekday class) \$1600/month (Saturday class)
Social Stars (Chinese)	(1 session/week) for 1 hr 30 mins each	\$1600/month (Saturday class)
Little Talkers , Chatterboxes, OT Group, and all other group programmes	(1 session/week) for 1 hr 30 mins each	\$1450/month
<b>Individual Therapies:</b> \$800/45mins (OT, ST, PT, SI and BB Clinic)		
<b>ABA Programmes:</b> Depends on programme details		
<b>Assessment service 2 types:</b> Development assessments and Diagnostic assessments		
Address :	4th Floor, Prime Mansion, 183-187 Johnston Road, Wanchai, Hong Kong.	
Website :	<a href="http://www.cdchk.org">www.cdchk.org</a> (Other services available. Details on website )	

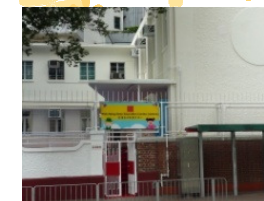
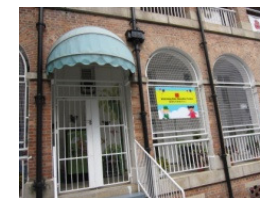




# Watchdog Early Education Centre



- Established in 1984, separate programme for both Cantonese and English speaking children and their children
- On Site preschool Rehabilitation Services (25 children in international kindergartens)
- Government Subsidized Programme - Hong Kong Centre (Monday to Friday) (70 children)
- Self-financed Package Programme – Hong Kong Centre & Jordan Centre (Monday to Friday) (70 children)
- Private Programme - Hong Kong Centre & Jordan Centre (Weekdays & Saturday) (90 children)



Government Subsidized Programme - Hong Kong Centre			
School Fee	\$730 / month	• Preschool Classes	➤ 3 hours each time, 1-2 times a week (30 mins group Speech Therapy, 30 mins group Music Therapy, 20 minutes individuals from special needs teacher within class for children on two days group)
		• Individual Therapy	➤ 45 mins Occupational Therapy (fine motor + S.I. Intervention + Therapeutic Listening) ➤ 45 mins Physiotherapy ➤ 45 mins Individual from Special Needs Teacher (for children on 1 Day Group or on individual program) ➤ 30 mins Music Therapy on need basis
Speech Therapy (Individual)		\$265 / 30 mins	\$395 / 45 mins

Self-financed Package Programme – Hong Kong Centre & Jordan Centre				
Toddler Group Fees	1 Day Group Fees	2 Days Group Fees	5 Days Group Fees	Individual Package
\$1500 MT Group & PT Group	\$1600 MT Group & ST Group	\$3400 Teacher 1:1 / MT Group / ST Group	\$7600 Teacher 1:1 / 2 MT Group / 1 ST Group / 1 OT Group	/
\$420 / 45 mins Teacher 1:1	\$380 / 30 mins ST Individual	\$550 / 45 mins OT Individual	\$550 / 45 mins PT Individual	\$150 / 30 mins MT Pair-up
* Therapies charges depending on number of therapy sessions taken in the month.				

Private Programme - Hong Kong Centre (Weekdays & Saturday) & Jordan Centre (Weekdays)			
Psycho-educational Assessment	\$8000 – under 6 years old \$10000 to \$12000 – over 6 years old	Occupational Therapy	\$780 / 45mins (English & Chinese)
In house Psycho-educational Assessment	\$5400 (English) \$2500 (Chinese)	Speech Therapy	\$780 / 45 mins (English) \$700 / 45 mins (Chinese)
Physiotherapy	\$780 / 45 mins (English)	Music Therapy	\$430 / 30 mins (Individual) \$270 / 30 mins (Pair Up)
African Drum Group	\$240 / 45 mins	Social Thinking Programme	\$400 / 60 mins (English)

\* Fee remission or subsidized rate for children from low income families - OT : \$150 / 45 mins & ST : \$100 / 30 mins (applicable for children on self finance programme or our government subsidized programme)





# Springboard at the Korean International School

- Established in 1994
- Description: Provides quality education for special needs children from 5 to 16. Caters for mild to moderate learning difficulties, including Down's Syndrome, Autism and Global Development Delay.

Includes life skill enhancement + ST	Korean International School		 <b>Youth Club</b>
	Primary Class	Middle Class	
Current Class Size :	10	6	6
Age Group	5 to 11 yrs old	11 to 16 yrs old	12-18
Staffing :	1 teacher & 2 TAs	1 teacher & 1 TA	3 staff
Monthly Fees (10 months):	<ul style="list-style-type: none"> <li>•Annual School Fee 2015-2016: Primary - \$89,400</li> <li>•Secondary - \$100,000</li> <li>•Springboard Programme: Primary - \$70,000</li> <li>Middle - \$75,000</li> </ul>		\$200 per session
Time :	8:30am to 3:00pm	8:30am to 3:00pm	Wednesday 5:30pm to 7:30pm
Address :	55 Lei King Road, Sai Wan Ho, Hong Kong.  Website : <a href="http://www.kis.edu.hk">http://www.kis.edu.hk</a>		4/F, Prime Mansion, 183-187 Johnston Road, Wan Chai, Hong Kong.





# The Children's Institute of Hong Kong & The Harbour School



THE HARBOUR SCHOOL  
Unlocking the best

Head of School Director :	Dr. Jadis E. Blurton (THS) & Dr. Jeremy H. Greenberg, BCBA-D (TCI)
Target :	Children 3 years to 14. Secondary School in Development The Children's Institute of Hong Kong (TCI) teaches children on the with special needs such as autism The Harbour School (THS) addresses is a progressive kindergarten and primary international school with a hands-on learning approach, small class size (6:1) and an individualized approach to learning.
Curriculum / Approach :	TCI :Applied Behavior Analysis special instruction, verbal behavior analysis, one to one sessions, with integration into mainstream classroom. THS : Unlocks the best in all students, small-group, differentiated instruction. Member of EARCOS & WASC.
Current Class Size :	TCI : One to one instruction, ABA By BCBA's, inclusion into THS, TCI@Home, STARS Social Skills. THS : 13 students, 1 lead teacher, and 1 co-teacher per class in each US Grade K through 8.
Staffing :	Principals, VP, Director, Board Certified Behavior Analysts in Hong Kong Schools
Monthly School Fees :	TCI : \$32,818 HKD per month Option to pay Annual Capital Levy or Purchase THS Family Debenture
Other Professional support :	Speech Therapy (paid separately if needed), Learning Support team for specific educational needs. Home based services through TCI and after-school social skills groups, parent training workshops, teacher training workshops, support groups, and sibling workshops.
Integration :	Continual integration into THS classroom as appropriate. TCI students integrate in a flexible, individualized manner.
Time :	TCI : 8:15 am to 3:15 pm (8:15 am to 12:30pm on Wednesdays)
Contact :	Tel: 2816-5222 Fax: 2816-5229 Address at Harbour School, 2/F, Kennedy Town Centre, 23 Belcher's St., Kennedy Town, HK
Websites :	<a href="http://www.ths.edu.hk">www.ths.edu.hk</a> <a href="http://www.tcihk.org">www.tcihk.org</a>





# Rainbow Project

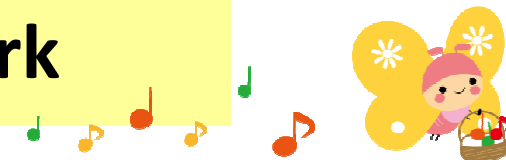


	Rainbow Primary Class	Rainbow Early Intervention Programme (EIP)
Project Director :	Mr Keith Lee	
Target :	Children aged 6 to 11 years old. Priority given to children diagnosed with ASD. Others are welcome.	Children aged 2.5 to 6 years old. Priority given to children diagnosed with ASD. Others are welcome.
Curriculum / Approach :	Curriculum: Curriculum is specially designed based on P-scale, ABLLS, Equals  Teaching methodology and approach: TEACCH Medium of instructions: English only	
Current Class Size:	6	AM Session: 1 / PM Session: 2
Vacancy:	Vacancy : 1	Vacancy:7
Staffing :	1 x Lead Teacher 1 x Educational Assistant	1 x Lead Teacher 1 x Educational Assistant
Monthly School Fees :	\$13,500 /month; inclusive of once a week therapy treatment (OT & ST)	\$9,000 /month; inclusive of once a week therapy treatment (OT &ST)
Integration :	Depending on child's readiness, partial integration may be arranged with a mainstream primary school	Depending on child's readiness, partial integration may be arranged with a mainstream kindergarten
Time :	8.30am to 3.30pm (Mon to Fri)	Half day (3 hours, am or pm) / Full day (6 hours); (Mon to Fri)
Address :	Rainbow Project Learning Centre G/F, Yuen Fai Court, 10 Sai Yuen Lane, Sai Ying Pun. Hong Kong	
Tel. No. :	25487123	
Website :	www.rainbowproject.org	

Rainbow Project Therapy Service and Outreach Programme	
Coordinator:	Ms June Soo
Target:	Priority given to children with ASD. Children with other special needs are welcome.
Services offered:	<u>Occupational therapy / Speech therapy</u> From 2.5 years onwards; offered both in English and Chinese Outreach Programme is in the planning process. Please call the centre for updates.
Staffing:	1 x Full Time OT 1 x Full Time ST
Fees:	<u>OT &amp; ST services:</u> \$800 per 45-minute session Subsidy is available for low income families. Please call the centre for more information.
Opening Hours:	<u>Therapy service:</u> 9am to 6pm (Mon to Fri)
Address:	Rainbow Project Learning Centre G/F, Yuen Fai Court, 10 Sai Yuen Lane, Sai Ying Pun. Hong Kong
Tel:	25487123



# Autism Recovery Network



Director :	Dino Trakakis + Ivan Liew
Target :	children on ASD aged from 6 months
Curriculum / Approach :	<ul style="list-style-type: none"> <li>• Practice latest version of ABA (Verbal Behavior) which focuses on teaching functional language in non-robotic manner</li> <li>• Recognized institution for ABA- Verbal behaviour , Social Thinking<sup>®</sup>, and Integrated Play Group (IPG)<sup>®</sup></li> <li>• In association with Hong Kong Institute of Education and Autism Hong Kong</li> <li>• Extensive experienced in organizing training seminars</li> </ul>
Classes and Services :	<ul style="list-style-type: none"> <li>• Centre-based (ABA Social Group, Social Thinking Program<sup>®</sup>, Integrated Play Group (IPG)<sup>®</sup> &amp; Social Skills Class in Kindergarten setting)</li> <li>• Home based ABA Therapy (3hr / 4hr Session, 15 – 44 hours per week)</li> </ul>
Staffing :	<ul style="list-style-type: none"> <li>• 50 ABA therapists (background : OT, PT and Psychology with Bachelor/Master/PHD Degree)</li> </ul>
Monthly School Fees :	<p><b>One-on One – Minimum 15 hours per week :</b></p> <ul style="list-style-type: none"> <li>• Home-based - HKD 950/1,260/1,570 (3hr Session) ; HKD1,270/1,680/2,090 (4hr Session)</li> <li>• Centre-based - HKD850 (3hr Session) / HKD1,100 (4hr Session)</li> </ul> <p><b>Centre-based group programme :</b></p> <ul style="list-style-type: none"> <li>• Social Skills Class (SOCIABLLS) - \$3750 (5 days per week)</li> <li>• Social Thinking<sup>®</sup> - HKD1,260 / 3hr Session</li> <li>• Integrated Play Group<sup>®</sup> (IPG<sup>®</sup>) – HKD1,800 / 1.5 hr Session</li> </ul>
Contact :	<p>Address : 14/F, Bangkok Bank Building, 18 Bonham Strand West, Sheung Wan, HK.          Telephone: 28549113 Fax: 36179113          Email: admin@autismrecovery.hk</p>
Website :	www.autismrecovery.hk





# Autism Partnership



愛培學校  
AOI PUI SCHOOL



	<b>Autism Partnership Limited</b>	<b>Aoi Pui School</b>
Director :	Toby Mountjoy	Toby Mountjoy / Principal : Kathleen Man
Target :	Individuals with ASD at all ages	Children with ASD from 4yrs 8 months and up
Curriculum / Approach :	Intensive Applied Behavior Analysis Program individualized according to age, language	
	One on one program with ABA trained therapist supervised by Behavior Consultant with monthly report meeting	<ul style="list-style-type: none"> <li>• Adapted National Curriculum with Autism-specific teaching guidelines</li> <li>• School days throughout the school year except public holidays and 5 weeks of vacation annually</li> </ul>
classes & services:	<ul style="list-style-type: none"> <li>• One on one individual therapy (Centre base &amp; Home session)</li> <li>• Little Learner Pre-school / Social Groups</li> <li>• School Shadowing Services</li> <li>• School Consultation</li> <li>• Professional training</li> <li>• Parent training</li> </ul>	<ul style="list-style-type: none"> <li>• Run in small class size of 8-10 students</li> <li>• High teacher-student ratio of 1 teacher to every 2 students</li> <li>• Chinese &amp; English Classes available</li> <li>• Senior classes available</li> <li>• After school interest and tutoring classes available</li> </ul>
Monthly Fees :	\$620per hour or \$24,800 for a package of 50 hours including supervision and clinic	\$20,000 including IEP meeting every 4 months.
Office hours : address	<b>9:00am to 6:30pm</b> <b>7/F, 633 King's Road, Quarry Bay, HK.</b>	8:30am to 2:30pm 16 Station lane, Hung Hom, Kowloon.
Website :	<a href="http://www.autismpartnership.com.hk">www.autismpartnership.com.hk</a>	<a href="http://www.apschool.edu.hk">www.apschool.edu.hk</a>

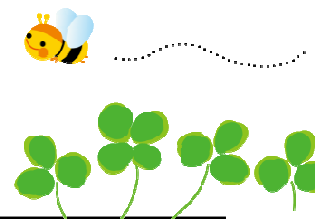






Family Partners School

# Family Partners School



Principal :	Mr. Mike Doherty
Target :	children on the Autism Spectrum
Curriculum / Approach :	<ul style="list-style-type: none"><li>• A modified National Curriculum<ul style="list-style-type: none"><li>- English</li><li>- Mathematics</li><li>- Science</li><li>- Technology</li><li>- PE</li><li>- Arts</li><li>- OLE</li></ul></li><li>• Other learning experiences which the pupils may need are included in the timetable, e.g. Sensory Support</li></ul>
Classes and Services :	<ul style="list-style-type: none"><li>• 4 classes (Maximum of 6 pupils per class)<ul style="list-style-type: none"><li>- KS1 for aged 5 – 7 yrs</li><li>- KS2 for aged 8 – 11 yrs</li></ul></li></ul> <p>From 8:30am to 2:45pm</p>
Staffing :	5 teachers & 5 teacher assistants
Monthly School Fees :	\$16500 (5 days)
Contact :	Address : 4th Floor 148 Connaught Road West ,Sheung Wan, HK. Tel: 2291 6000
Website :	Under construction





# International Christian School

<b>Bridges Program at International Christian School</b>	
Special Needs Teachers :	One Teaching Specialist and currently 3 educational assistants (Bridges Center)
Target :	Children aged 6-18 with mild intellectual delays; mild global developmental delays: standard scores on assessments ranging from 60-75 in intelligence, achievement, and adaptive behavioral development.
Curriculum / Approach :	Based on an American Christian school curriculum that utilizes both standards and individual educational planning to teach (1) Functional Academics = literacy and numeracy; (2) Communication = listening and speaking; (3) Socialization = awareness of self and others; (4) Christian character = Bible instruction.
Classes & services:	Elementary and secondary classes. Program capacity is 12-14 students.
Inclusion	Students in the Bridges Program are included in ICS activities as appropriate for each student's level of readiness. Inclusion with typical peers is used to support learning in communication, socialization, and Christian character development.
Hours :	Elementary: 8:30-3:00; Secondary: 8:00-3:00
2015-16 annual tuition and Fees :	Elementary: \$109,600.00. Middle School: \$145,300.00. High School: \$148,900.00. An additional annual Bridges fee of \$9,390/mo is added to the regular tuition costs to help address low teacher-student ratios.
Address :	1 On Muk Lane, Shek Mun, Sha Tin, N.T.
Contact :	Tel : 3920 0010 Email : <a href="mailto:admissions@ics.edu.hk">admissions@ics.edu.hk</a>
Website :	<a href="http://www.ics.edu.hk">www.ics.edu.hk</a>





ANFIELD SCHOOL

The British Curriculum School in Hong Kong

# Anfield School (St. Bosco Centre)

SENCO:	Maggie Duffield
Target :	SEN primary aged children with the potential to be mainstreamed without 1:1 shadow support
Curriculum / Approach :	<ul style="list-style-type: none"><li>✓ Modified teaching programme curriculum based on the English National Curriculum</li><li>✓ English, Maths, Science, Humanities, ICT, PSHCE and Mandarin within the class</li><li>✓ Join mainstream pupils for Music, Art, and DT and PE</li><li>✓ Aim: for full inclusion in a mainstream class at a later stage</li></ul>
Classes and Services :	✓ have a visiting SLT and a visiting OT weekly; they provide the premises, contractual agreements are private between therapist and families, not the school.
Capacity	Maximum number of children is 10
Staffing :	1 qualified teacher; 2 teaching assistants
Monthly School Fees :	Please contact Admissions directly for up to date fees (current fees: \$7600 on top of school fees of \$11100 , totals \$18700)
Contact for Admissions	Tel : (852) 2692 8823
Address :	<a href="http://www.anfield.com.hk">www.anfield.com.hk</a>





## Government / Aided Primary School

Hong Kong Island:	<ul style="list-style-type: none"> <li>•Catholic Mission School (Central &amp; Western District)</li> <li>•Chiu Sheung School, Hong Kong(Central &amp; Western District)</li> <li>•Ling Liang Church Sau Tak Primary School(Tung Chung)</li> <li>•Li Sing Tai Hang School(Causeway Bay)</li> <li>•Po Kok Primary School(Happy Valley)</li> <li>•Sir Ellis Kadoorie (Sookunpo) Primary School (Causeway Bay)</li> </ul>
Kowloon:	<ul style="list-style-type: none"> <li>•Yaumati Kaifong Association School (Yaumati)</li> <li>•P.L.K. Camões Tan Siu Lin Primary School (Yau Ma Ti) *(DSS \$14,800 To be paid in 10 installments)</li> <li>•Li Cheng Uk Government Primary School(Shum Shui Po)</li> <li>•Po Leung Kuk Lam Man Chan English Primary School(Kowloon City)*(DSS\$12,800 (10 instalments)</li> <li>•Hong Kong Taoist Association Wun Tsuen School(Kwun Tong)</li> <li>•Man Kiu Association Primary School(Kwun Tong)</li> <li>•Delia (Man Kiu) English Primary School(Tsing Yi) *(DSS \$7,370 per annual )</li> </ul>
Target :	<ul style="list-style-type: none"> <li>•children with special needs</li> <li>•children from south Asia: e.g. Pakistani, Filipino, Indian, Nepalese</li> </ul>
Curriculum / Approach :	local curriculum, academic driven
Current Class Size :	25 - 30 children in a class
Monthly School Fees :	free of charge (Except for schools on DSS)





## The Nesbitt Centre (formerly Hong Kong Vocational Centre )

Executive Director :	Mr. Surinder Punjya
Target :	Established in 1993, for international adults with a Learning Disability
Funding :	Partially subvention from Social Welfare Department Donors & Partnerships: Clifford Chance, Hypsos, Linklaters, Pacific Coffee Company, Lotteries Fund, Wing Hing Construction, David S.K. Au & Associates, The Hong Kong Jockey Club Charities Trust, Goldman Sachs (Asia) L.L.C., Canadian Chamber of Commerce, St. John's Cathedral, CLARES, Operation Santa Claus/SCMP, Uncle Ross, Speak and the American Club.
Curriculum / Approach :	The Preparation for Life Programme, aligned to the person centered approach caters for the individual needs of the service user as to raise his/her competence and confidence levels: Life Skills, Independent Living, Recreation & Leisure, Vocational Education, Structured Workplace Learning and Planning for the Future
Classes and Services :	Sai Ying Pun Day Activity Centre and Chai Wan Integrated Life Skills Centre (including a residential home) Two social enterprises: The Nest Coffee Shop and Café 8
Staffing :	16 full time and 3 part time
Monthly School Fees :	TNC day programme: \$6800/month Residential Home : \$300/night
Contact :	Website : <a href="http://www.nesbittcentre.org.hk">www.nesbittcentre.org.hk</a> Tel. no. : 28134550
Address :	LG/F, Sai Ying Pun Community Complex, 2 High Street, Sai Ying Pun, HK.





# Little Kids Learning Academy



Director :	Ms. Bobo Chan
Target :	Pre-school children with suspected ASD / PDD / language delays, children who are already in school and requires support.
Curriculum / Approach :	<ul style="list-style-type: none"><li>• Applied Behavioral Analysis ( ABA)<ul style="list-style-type: none"><li>• Discrete Trial Training (DTT)</li><li>• Naturalistic Teaching</li><li>• Positive Behavior Support</li><li>• Verbal Behavior</li><li>• Fluency</li><li>• Pictures Communication Exchange System (PECS)</li><li>• Social thinking</li></ul></li></ul> <p>* Programs include receptive and expressive language, cognitive skills ( logic &amp; reasoning , auditory processing, comprehension), social communication, social skills, play skills, self-management skills ( toileting, independence), concepts ( why/because, sequencing, big, small, long, short, colors, shapes , categories), motor skills, academic skills, classroom skills and behavior management.</p>
Classes and Services :	<ul style="list-style-type: none"><li>• One-on-one intensive therapy in Cantonese or English</li><li>• Social group</li><li>• Parent training</li><li>• School shadow</li><li>• Consultation on local mainstream school</li></ul>
Staffing :	<ul style="list-style-type: none"><li>• BCBA program supervisor, trained behavioral therapists</li></ul>
Fees :	\$850 flat rate per session (3 hours session 9-12noon) & (2.5 hours session s- 1:10-3:40pm or 4-6:30pm)
Contact :	Unit 1101-4, 11/F, Rightful Centre, 12 Tak Hing Street, Jordan, Kowloon. (MTR Jordan Station B1 Exit) Tel. No. : 3163 2236 Email : <a href="mailto:info@littlekids.org.hk">info@littlekids.org.hk</a>
Website :	<a href="http://www.littlekids.org.hk">www.littlekids.org.hk</a>





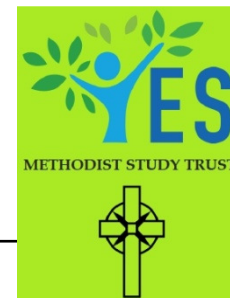
Bridge Academy Education Centre

# Bridge Academy

Head of School :	Mr. Victor Wong
Target :	The children we support have a wide spectrum of challenges including Autism Spectrum Disorder (ASD), Dyslexia, Dyspraxia, Global Developmental Delay, Cerebral Palsy, Down Syndrome, Attention Deficit Hyperactivity Disorder (ADHD), as well as a variety of learning difficulties.
Curriculum / Approach :	Bridge Academy offers a holistic programme and assessment to monitor the progress of the key developmental areas in children including: cognitive function, fine motor, gross motor, sensory integration, self-help skills, expressive and receptive language, and social relationships. Our programmes are based on the <b>British National Curriculum</b> and level appropriate individualization.
Classes and Services :	<ol style="list-style-type: none"> <li>1) 1-on-1 Intensive Programme – 1:1 teacher/student ratio</li> <li>2) Group Programme – 1:4 teacher/student ratio, classroom settings</li> <li>3) Partnership Programme – 1:4 teacher/student ratio, classroom settings with 1-hour 1-on-1 intensive training daily</li> <li>4) Pre-School Programme – 1:4 teacher/student ratio, classroom settings</li> </ol>
Staffing :	20+ Professionals including: Programme Supervisor, Education Psychologist, Curriculum Consultant, Speech Therapist, Applied Behaviour Analysis (ABA) Therapists and SEN Teachers
Fees :	Tuition: \$7,000 / month and up *Fee Remission Programme available
Contact :	Ms. Hilda Ngo, Associate Director (Operations) Tel. No. : 3563-8060 / Email : <a href="mailto:hngo@bridge.edu.hk">hngo@bridge.edu.hk</a>
Website :	<a href="http://www.bridge.edu.hk">www.bridge.edu.hk</a>



# Youth Empowerment Service (YES)



Principle / Director :	Ms. Chan Siu Lai
Target :	<ul style="list-style-type: none"> <li>aged 16-30 with special educational needs who have graduated from school</li> <li>mild to moderate grade of intellectual disabilities</li> <li>suitable for small group learning</li> <li>able to walk independently or with walking aids</li> <li>medically stable</li> <li>able to exercise basic self-care skills</li> <li>exceptional cases may be considered for admission</li> </ul>
Curriculum / Approach :	<p><u>Introduction:</u> Youth Empowerment Service (YES) is a comprehensive English-speaking post-school programme for young adults with Special Educational Needs (SEN). As a community-based transition programme, our trainees learn skills they need to enter their adulthood and the community such as social and communications skills, independent living skills, functional skills and understanding of relationships with others, through various activities and community and vocational experiences. YES is fully supported by Methodist Study Trust and Yang Memorial Methodist Social Service. YES started operation in April 2014.</p> <p><u>Curriculum:</u></p> <ul style="list-style-type: none"> <li>•Equals 'Moving On' Literacy and Numeracy, Functional Skills and Sex and Relationships Education</li> <li>•Tailor-made instructional materials by SEN Teachers</li> </ul>
Classes and Services :	A total of 12 trainees can be accommodated
Staffing :	2 qualified and experienced SEN Teachers with 2 educational assistants
Monthly School Fees :	\$9,500 / month
Contact :	Alice Lee / Winkii Lau Email: <a href="mailto:yes@yang.org.hk">yes@yang.org.hk</a> Telephone: 2351 7393 Fax: 2353 0054
Website :	<a href="http://yes.yang.org.hk">http://yes.yang.org.hk</a> (under construction at the moment)







**The Rock Foundation**  
Growing up as a person with special needs  
磐石協會關愛成長路

A Member of HKCSS 社

Executive Director :	Ms Hazel Delfina Chang
Target :	Age 16 and above young adults with disabilities and/or special educational needs (namely core members)
Funding :	The Rock Foundation Limited is a non-profit organization. We do not receive any subsidies from the Hong Kong Government. Apart from a 3-tier fee charging structure, 50% of our programme cost is covered by generous donations from individuals or project funding.
Curriculum / Approach :	The four stage programme reflects the four phases of development in the growth of the post-school young adults which are Foundation stage, Consolidation stage, Outreaching stage and Social Integration stage.
Classes and Services :	All programmes are fitted into a 5-day, 10am-4pm time table. Each programme is for one year, after which our core-members can move up to the next programme or stay in the same programme for consolidation. Part time programmes are available for individual modules selection.
Staffing :	1 Senior Education Officer, 2 Education Officer, 1 Art Teacher, 1 Administrator, 6 Specialist Trainers
Monthly School Fees :	Tier 1 : 4 post-secondary years (age 18-22) HK\$10,500 per month Tier 2 : 23 or above HK\$2,600 per month Tier 3 : working adults \$200 per month
Contact :	Website : <a href="http://www.therf.org">www.therf.org</a> Tel. no. : 2815-0260
Address :	4C Sun Hey Mansion, 72 Hennessy Road, Wanchai, Hong Kong





# KIDS Connect

Clinical Director :	Miss Emily Kwan, BCBA, MADS
Target :	We facilitate the development of children from toddler to primary school age (age 1 – 12) through services at the center, home and school based services. We specialize in services for children with <i>Autism Spectrum Disorder (ASD)</i> , <i>Global Developmental Delay</i> , <i>Sensory Integrative Disorder</i> , and those who are <i>weak in social and language development</i> .
Approach :	Kids Connect conducts a comprehensive behavioral assessment and develops the Individualized Educational Plan (IEP) for each child. We have a strong emphasis on the development of <i>play, social and language skills</i> through the use of a combination of evidence – based strategies, along with the facilitation of development in readiness, imitation, motor and cognitive skills.
Classes and Services :	<u>Behavioral Intervention (includes 1:1 and small group):</u> <ul style="list-style-type: none"><li>•5 Days (morning / afternoon / all day)</li><li>•3 Days (morning / afternoon / all day)</li></ul> <u>School Shadowing:</u> <ul style="list-style-type: none"><li>•5 Days (morning / afternoon / all day)</li></ul> <u>Social Skills Program:</u> <ul style="list-style-type: none"><li>•We offer Cantonese and English social skills classes for age 3 – 8 years old.</li></ul>
Staffing :	A clinical team of 15 professionals including the Clinical Director, Clinical Supervisor, Program Supervisors and Behavioral Therapists with certified qualifications.
Monthly Fees :	Varies depending on the program
Contact :	Website: <a href="http://www.kidsconnect.hk">www.kidsconnect.hk</a> Tel: (852) 2871 2631 or Email: <a href="mailto:admin@kidsconnect.hk">admin@kidsconnect.hk</a>
Address :	Unit 2103, 21/F, Universal Trade Center, 3 Arbuthnot Road, Central

