

**Watchdog**

監護者

Early Education Centre  
早期教育中心



## Summer Programme 2026 Hong Kong Centre 香港中心

	Application dates 申請日期
<b>Watchdog EETC Students</b> 早期教育及訓練中心課程	4 <sup>th</sup> May onwards 5月4日起
<b>Other applicants</b> (Self-Financing, OPRS and Saturday students inclusive)  其他申請 (包括平日及星期六自費服務，及非監護 者學生)	11 <sup>th</sup> May onwards 5月11日起
<b>Deadline for all applications: 29<sup>th</sup> May 2026 (Friday)</b> 所有申請截止日期：2026年5月29日	

**First come, First Served**



### Overview of children group courses (page 1)

Code 編號  (Please click the code for more details) 詳情請點擊以下編號連結	Course 課程名稱	Age Range 適合年齡	Date 日期	Time 時間	Instructor 負責老師	Session 節數	Size 人數	Language 語言	Fees 費用	
									Current Watchdog EETC Student  現就讀監護者早期 教育及訓練中心課 程學生	Others (OPRS and Saturday students inclusive)  其他 (包括校服服務及星 期六自費服務學生)
Week 1 [14 <sup>th</sup> July (Tue) to 17 <sup>th</sup> July (Fri)]										
<a href="#">HKG - 01</a>	Simply Fun & Play	3- 4.5 years old	14 July (Tue) To 17 July (Fri)	9:00 am To 11:00 am	Angel Lam	4	Max 4	English	\$1,600 (\$400 x 4 sessions)	\$3,120 (\$780 x 4 sessions)
<a href="#">HKG -02</a>	探索童樂園	2- 3 years old	14 July (Tue) To 17 July (Fri)	9:00 am To 10:30 am	何老師	4	Max 4	廣東話	\$1,200 (\$300 x 4 sessions)	\$2,340 (\$585 x 4 sessions)
<a href="#">HKG - 03</a>	Social Interaction	4.5- 6 years old	14 July (Tue) To 17 July (Fri)	2:30 pm To 4:30 pm	Shirley Yang	4	Max 6	English	\$1,600 (\$400 x 4 sessions)	\$3,120 (\$780 x 4 sessions)
<a href="#">HKG - 04</a>	Primary Preparation	4.5- 6 years old	14 July (Tue) To 17 July (Fri)	2:30 pm To 4:30 pm	Cherry Kwok	4	Max 6	English	\$1,600 (\$400 x 4 sessions)	\$3,120 (\$780 x 4 sessions)



### Overview of children group courses (page 2)

Code 編號 (Please click the code for more details) 詳情請點擊以下編號連結	Course 課程名稱	Age Range 適合年齡	Date 日期	Time 時間	Instructor 負責老師	Session 節數	Size 人數	Language 語言	Fees 費用	
									Current Watchdog EETC Student 現就讀監護者早期 教育及訓練中心課 程學生	Others (OPRS and Saturday students inclusive) 其他 (包括到校服務及星 期六自費服務學生)
Week 2 [20 <sup>st</sup> July (Mon) to 24 <sup>th</sup> July (Fri)]										
<a href="#">HKG-05</a>	Let's get messy	3- 4.5 years old	20 July (Mon) To 24 July (Fri)	9:00 am To 11:00 am	Cherry Kwok	5	Max 4	English	\$2,000 (\$400 x 5 sessions)	\$3,900 (\$780 x 5 sessions)
<a href="#">HKG-06</a>	Social Roleplay	4.5- 6 years old	20 July (Mon) To 24 July (Fri)	9:00 am To 11:00 am	Shirley Yang	5	Max 6	English	\$2,000 (\$400 x 5 sessions)	\$3,900 (\$780 x 5 sessions)
<a href="#">HKG-07</a>	Emotional Regulation (including a sponsored outing)	4.5- 6 years old	20 July (Mon) To 24 July (Fri)	2:30 pm To 4:30 pm	Angel Lam	5	Max 6	English	\$1,600 (\$400 x 4 sessions)	\$3,120 (\$780 x 4 sessions)
<a href="#">HKG-08</a>	魔法廚房 (including a sponsored outing)	3-4.5 years old	20 July (Mon) To 24 July (Fri)	2:30 pm To 4:30 pm	何老師	5	Max 6	廣東話	\$1,600 (\$400 x 4 sessions)	\$3,120 (\$780 x 4 sessions)



### Overview of children group courses (page 3)

Code 編號 <small>(Please click the code for more details) 詳情請點擊以下編號連結</small>	Course 課程名稱	Age Range 適合年齡	Date 日期	Time 時間	Instructor 負責老師	Session 節數	Size 人數	Language 語言	Fees 費用	
									Current Watchdog EETC Student 現就讀監護者早期教育及訓練中心課程學生	Others (OPRS and Saturday students inclusive) 其他 (包括到校服務及星期六自費服務學生)
Week 3 [27 <sup>th</sup> July (Mon) to 31 <sup>st</sup> July (Fri)]										
<a href="#">HKG- 09</a>	Game Play	3- 4.5 years old	27 July (Mon) To 31 July (Fri)	9:00 am to 11:00 am	Shirley Yang	5	Max 4	English	\$2,000 (\$400 x 5 sessions)	\$3,900 (\$780 x 5 sessions)
<a href="#">HKG- 10</a>	Colorful World	4.5- 6 years old	27 July (Mon) To 31 July (Fri)	9:00 am To 11:00 am	Angel Lam	5	Max 6	English	\$2,000 (\$400 x 5 sessions)	\$3,900 (\$780 x 5 sessions)
<a href="#">HKG- 11</a>	The Science Explorer	3- 4.5 years old	27 July (Mon) To 31 July (Fri)	2:30 pm To 4:30 pm	Cherry Kwok	5	Max 6	English	\$2,000 (\$400 x 5 sessions)	\$3,900 (\$780 x 5 sessions)
<a href="#">HKG- 12</a>	與你童遊	4.5-6 years old	27 July (Mon) To 31 July (Fri)	2:30 pm To 4:30 pm	何老師	5	Max 6	廣東話	\$2,000 (\$400 x 5 sessions)	\$3,900 (\$780 x 5 sessions)



**Week 1 [14<sup>th</sup> July (Tue) to 17<sup>th</sup> July (Fri)]**

Code 編號	Course 課程名稱	Date 日期	Time 時間	Place 地點	No. of Session 節數	Size 人數	Language 語言	Pre-requisite 參加者能力要求	Fees 費用		Instructor 導師
									Current Watchdog EETC Student 現就讀監護者早期教育及訓練中心課程學生	Others (OPRS and Saturday students inclusive) 其他 (包括到校服務及星期六自費服務學生)	
HKG-01	Simply Fun & Play	14 July (Tue) To 17 July (Fri)	9:00 am To 11:00 am	Blue Room	4	Max 4	English	<b>Chronological age:</b> 3 to 4.5 years old <b>Follow instructions:</b> 1-step <b>Communication:</b> Speaks in single words <b>Sitting Tolerance:</b> Can remain seated for at least 5 mins <b>Attention:</b> Can stay focused for 5 mins	\$1,600 (\$400 x 4 sessions)	\$3,120 (\$780 x 4 sessions)	<b>Angel Lam</b> (Special Needs Teacher)  <b>Mung Man Zoen</b> (Music Therapist) *Music Therapy is sponsored by Community Chest  <b>Connie Ng</b> (Speech Therapist)

**Content:**

Children learn through play, and they explore the world by different senses such as looking, listening, touching, smelling, tasting, and movement. In these 4-day classes, we will have messy play/sensory play which focuses on the tactile sensory input, outdoor & indoor activities, music & movement, story & circle times. We will end our last day with water play. Kindly prepare children with a set of spare clothes and wear sandals.

**Objectives:**

- Explore and express through different senses
- Bring social awareness
- Practice turn-taking, waiting, and sharing skills
- Increase joint attention, eye contact, and focus
- Enhance fine motor and gross motor skills

There will be Music Therapy and Speech Therapy groups included in this group.

**Week 1 [14<sup>th</sup> July (Tue) to 17<sup>th</sup> July (Fri)]**

Code 編號	Course 課程名稱	Time 時間	Place 地點	No. of Session 節數	Size 人數	Language 語言	Pre-requisite 參加者能力要求	Fees 費用		Instructor 導師
								Current Watchdog EETC Student 現就讀監護者早期教育 及訓練中心課程學生	Others (OPRS and Saturday students inclusive) 其他 (包括到校服務及星期六 自費服務學生)	
HKG-02	探索童樂園	9:00 am To 10:30 am	黃班房	4	MAX 4	廣東話	參加者能力要求: <ul style="list-style-type: none"> <li>2-3 歲幼兒</li> </ul>	\$1,200 (\$300 x 4 sessions)	\$2,340 (\$585 x 4 sessions)	何老師 (特殊教育老師)  Mung 哥哥 (音樂治療師) *公益金贊助本中心的音樂治療 師服務  杜姑娘 (物理治療師)

目標 :

- 刺激感官探索
- 發揮和提升創意
- 提高專注力及眼手協調
- 增加兒童自我解決問題的能力

內容 :

- 利用不同的材料創作及玩樂，一方面能刺激兒童多元感官發展，另一方面鼓勵自主探索，發揮創作力，讓他們從遊戲中學習。
- 透過各種的感官遊戲，提升兒童認知上的概念

此小組將提供物理治療及音樂治療之小組訓練

**Week 1 [14<sup>th</sup> July (Tue) to 17<sup>th</sup> July (Fri)]**

Code 編號	Course 課程名稱	Date 日期	Time 時間	Place 地點	No. of Session 節數	Size 人數	Language 語言	Pre-requisite 參加者能力要求	Fees 費用		Instructor 導師
									Current Watchdog EETC Student 現就讀監護者早期 教育及訓練中心課 程學生	Others (OPRS and Saturday students inclusive) 其他 (包括到校服務及星 期六自費服務學生)	
HKG-03	Social Interaction	14 July (Tue) To 17 July (Fri)	2:30 pm To 4:30 pm	Blue room	4	MAX 6	English	<b>Chronological age:</b> 4.5 to 6 years old <b>Follow instructions:</b> 2-steps <b>Communication:</b> Speaks in short phrase <b>Sitting Tolerance:</b> Can remain seated for at least 10mins <b>Attention:</b> Can stay focused for 10mins	\$1,600 (\$400 x 4 sessions)	\$3,120 (\$780 x 4 sessions)	<b>Shirley Yang</b> (Special Needs Teacher)  <b>Crystal Lee</b> (Music Therapist) *Music Therapy is sponsored by Community Chest  <b>Cindy Chan</b> (Speech Therapist)

**Content:**

Our Social Interaction group is dedicated to helping children enhance their requesting joint attention, and conversational skills, and to respond to emotional scenarios.

This week, children will participate in engaging and enjoyable scenario play and board games.

**Objectives:**

- Use an appropriate greeting.
- Initiate a request or joint attention toward an adult or peer.
- Take a turn and respond to an adult or peer during a structured activity.
- Respond sympathetically to emotional scenarios.

There will be Music Therapy and Speech Therapy groups included in this group.

**Week 1 [14<sup>th</sup> July (Tue) to 17<sup>th</sup> July (Fri)]**

Code 編號	Course 課程名稱	Time 時間	Place 地點	No. of Session 節數	Size 人數	Language 語言	Pre-requisite 參加者能力要求	Fees 費用		Instructor 導師
								Current Watchdog EETC Student 現就讀監護者早期教育及訓練中心課程學生	Others (OPRS and Saturday students inclusive) 其他 (包括到校服務及星期六自費服務學生)	
HKG-04	Primary Preparation	2:30 pm To 4:30 pm	Yellow Room	4	MAX 6	English	<b>Chronological age:</b> 4.5 to 6 years old <b>Follow instructions:</b> 2-3 steps <b>Communication:</b> Speaks in sentences <b>Sitting Tolerance:</b> Can remain seated for at least 15mins <b>Attention:</b> Can stay focused for 15mins Provide simple solutions to problems Identify emotions with reasons	\$1,600 (\$400 x 4 sessions)	\$3,120 (\$780 x 4 sessions)	<b>Cherry Kwok</b> (Special Needs Teacher)  <b>Crystal Lee</b> (Music Therapist) *Music Therapy is sponsored by Community Chest  <b>Jacqueline Ng</b> (Speech Therapist)

**Content:**

Children will participate in activities designed to simulate a primary school environment, including:

- Developing early literacy and math skills (sight words reading, story time, math games, etc.)
- Practicing attention and cooperation through multi-step group games (obstacle courses, paired outdoor games, etc.)
- Following classroom routines, transitions, and rules (recesses, school bells, schedules, etc.)

**Objectives:**

- Promote independence and self-care skills: organizing personal belongings, adhering to classroom routines, interacting with peers, etc.
- Prepare participants for entry into primary school
- Encourage social interactions with classmates

There will be Music Therapy and Speech Therapy groups included in this group.

**Week 2 [20<sup>st</sup> July (Mon) to 24<sup>th</sup> July (Fri)]**

Code 編號	Course 課程名稱	Time 時間	Place 地點	No. of Session 節數	Size 人數	Language 語言	Pre-requisite 參加者能力要求	Fees 費用		Instructor 導師
								Current Watchdog EETC Student 現就讀監護者早期教育及訓練中心課程學生	Others (OPRS and Saturday students inclusive) 其他 (包括到校服務及星期六自費服務學生)	
HKG-05	Let's get messy	9:00 am To 11:00 am	Yellow Room	5	MAX 4	English	<b>Chronological age:</b> 3 to 4.5 years old <b>Follow instructions:</b> 1-step <b>Communication:</b> Speaks in single words <b>Sitting Tolerance:</b> Can remain seated for at least 5mins <b>Attention:</b> Can stay focused for 5mins	\$2,000 (\$400 x 5 sessions)	\$3,900 (\$780 x 5 sessions)	<b>Cherry Kwok</b> (Special Needs Teacher)  <b>Mung Man Zoen</b> (Music Therapist) *Music Therapy is sponsored by Community Chest  <b>Jacqueline Ng</b> (Speech Therapist)

**Content:**

This summer group invites participants to discover and explore with their senses through the following activities:

- Sensory path experiences
- Tactile sensory play
- Water and sand play
- Hand-painting activities

**Objectives:**

- Foster creativity and curiosity
- Enhance joint attention
- Engage multiple senses (smell, touch, etc.) to enhance learning

There will be Music Therapy and Speech Therapy groups included in this group.

**Week 2 [20<sup>st</sup> July (Mon) to 24<sup>th</sup> July (Fri)]**

Code 編號	Course 課程名稱	Date 日期	Time 時間	Place 地點	No. of Session 節數	Size 人數	Language 語言	Pre-requisite 參加者能力要求	Fees 費用		Instructor 導師
									Current Watchdog Subsidized Programme Student 現就讀監護者 資助課程學生	Others (OPRS and Saturday students inclusive)  其他 (包括到校服務及星 期六自費服務學生)	
HKG-06	Social Roleplay	20 July (Mon) To 24 July (Fri)	9:00 am To 11:00 am	Blue Room	5	Max 6	English	<b>Chronological age:</b> 4.5 to 6 years old <b>Follow instructions:</b> 2-3 steps <b>Communication:</b> Speaks in sentences <b>Sitting Tolerance:</b> Can remain seated for at least 15mins <b>Attention:</b> Can stay focused for 15mins Provide simple solutions to problems Identify emotions with reasons	\$2,000 (\$400 x 5 sessions)	\$3,900 (\$780 x 5 sessions)	<b>Shirley Yang</b> (Special Needs Teacher)  <b>Mung Man Zoen</b> (Music Therapist) *Music Therapy is sponsored by Community Chest  <b>Jacqueline Ng</b> (Speech Therapist)

**Content:**

Our wonderful Social Roleplay group is dedicated to fostering children's understanding of perspectives, noticing others, recognizing emotions and body language, initiating conversation, problem-solving in social situations, and developing a generalization plan.

This week, children will participate in various structured role-play activities.

**Objectives:**

- Identify and notice others' perspectives.
- Appropriate response to emotional role-playing scenarios.
- Initiate a conversation and respond appropriately.
- Fixing social mistakes.
- Generalize skills.

There will be Music Therapy and Speech Therapy groups included in this group.

## Week 2 [20<sup>st</sup> July (Mon) to 24<sup>th</sup> July (Fri)]

Code 編號	Course 課程名稱	Date 日期	Time 時間	Place 地點	No. of Session 節數	Size 人數	Language 語言	Pre-requisite 參加者能力要求	Fees 費用		Instructor 導師
									Current Watchdog EETC Student 現就讀監護者早期教育及訓練中心課程學生	Others (OPRS and Saturday students inclusive) 其他 (包括到校服務及星期六自費服務學生)	
HKG-07	Emotional Regulation	20 July (Mon) To 24 July (Fri)	2:30 pm To 4:30 pm	Yellow Room	5	MAX 6	English	<p><b>Chronological age:</b> 4.5 to 6 years old  <b>Follow instructions:</b> 2-3 steps  <b>Communication:</b> Speaks in sentences  <b>Sitting Tolerance:</b> Can remain seated for at least 15mins  <b>Attention:</b> Can stay focused for 15mins</p> <ul style="list-style-type: none"> <li>• Provide simple solutions to problems</li> <li>• Identify emotions with reasons</li> </ul>	\$1,600 (\$400 x 4 sessions)	\$3,120 (\$780 x 4 sessions)	<p><b>Angel Lam</b> (Special Needs Teacher)</p> <p><b>Crystal Lee</b> (Music Therapist) *Music Therapy is sponsored by Community Chest</p> <p><b>Cindy Chan</b> (Speech Therapist)</p>

**Content:**

Emotional regulation means managing feelings to respond to a situation appropriately. Children, especially need to learn how to manage their own feelings appropriately in different situations, such as in school, play dates, and at home etc. They need to understand their emotions and how to handle them in the right way.

In these five days, children will be able to identify their own feelings and understand different situations and how we react and feel differently. Children will learn varies kinds of activities or tools can help regulate their emotions, such as yoga exercises, listening to calming music, sensory bin play, and more.

**Objectives:**

- Name the emotions
- Follow multi-step instructions
- Collaborate and exchange ideas with peers
- Encourage self-expression
- Promote problem-solving skills
- Encourage teamwork
- Build confidence

On the final day of the activity, there will be an outing. All participants will take a free shuttle bus to make pizza off-site. Further details will be announced later.



There will be Music Therapy and Speech Therapy groups included in this group.

**Week 2 [20<sup>st</sup> July (Mon) to 24<sup>th</sup> July (Fri)]**

Code 編號	Course 課程名稱	Time 時間	Place 地點	No. of Session 節數	Size 人數	Language 語言	Pre-requisite 參加者能力要求	Fees 費用		Instructor 導師
								Current Watchdog EETC Student 現就讀監護者早期 教育及訓練中心課程學 生	Others (OPRS and Saturday students inclusive) 其他 (包括到校服務及星 期六自費服務學生)	
HKG-08	魔法廚房	2:30 pm To 4:30 pm	藍班房	5	MAX 6	廣東話	參加者能力要求： <ul style="list-style-type: none"> <li>• 年齡（按實際年齡）：3 至 4.5 歲</li> <li>• 執行指令：可跟從 2 步指令</li> <li>• 溝通能力：能以短句表達</li> <li>• 坐姿耐性：可保持坐姿至少 10 分鐘</li> <li>• 專注能力：可專注約 10 分鐘</li> </ul>	\$1,600 (\$400 x 4 sessions) + 材料費 \$100	\$3,120 (\$780 x 4 sessions) + 材料費 \$100	何老師 (特殊教育老師)  Crystal 姐姐 (音樂治療師) *公益金贊助本中心的音樂治療師 服務  吳姑娘 (言語治療師)

**目標：**

- 培養幼兒的創造力和想像力
- 提高手眼協調能力，訓練小肌肉和精細動作發展
- 培養良好的飲食習慣和營養意識。
- 增強幼兒的耐心和毅力
- 培養團隊合作精神，學會與他人溝通和分工合作。
- 提升幼兒的生活實用技能。

此活動最後一天，將有外出活動。  
 全體組員將會乘搭免費穿梭巴士出外製作薄餅。詳情稍候公佈。

**內容：**

- 嘗試不同食材和烹飪方法，創作出色香味美的食物。
- 運用各種精細的動作，例如攪拌、量度材料，甚至切菜等來進行煮食。
- 讓幼兒了解不同食材的營養價值，以及煮食的製作過程。



\*備註: 如幼兒有食物敏感，請提前通知小組的負責老師。另外，幼兒上課時請自備食物盒。

**Week 3 [27<sup>th</sup> July (Mon) to 31<sup>st</sup> July (Fri)]**

Code 編號	Course 課程名稱	Date 日期	Time 時間	Place 地點	No. of Session 節數	Size 人數	Language 語言	Pre-requisite 參加者能力要求	Fees 費用		Instructor 導師
									Current Watchdog EETC Student 現就讀監護者早期教育及訓練中心課程學生	Others (OPRS and Saturday students inclusive) 其他 (包括到校服務及星期六自費服務學生)	
HKG-09	Game Play	27 July (Mon) To 31 July (Fri)	9:00 am To 11:00 am	Blue Room	5	Max 4	English	<b>Chronological age:</b> 3 to 4.5 years old <b>Follow instructions:</b> 1-step <b>Communication:</b> Speaks in single words <b>Sitting Tolerance:</b> Can remain seated for at least 5mins <b>Attention:</b> Can stay focused for 5mins	\$2,000 (\$400 x 5 sessions)	\$3,900 (\$780 x 5 sessions)	<b>Shirley Yang</b> (Special Needs Teacher)  <b>Mung Man Zoen</b> (Music Therapist) *Music Therapy is sponsored by Community Chest  <b>Connie Ng</b> (Speech Therapist)

**Content:**

Our Gameplay group is committed to nurturing children's play skills, including waiting for their turn, sharing skills, and following basic game rules.

This week, children will engage in a variety of structured group activities, including a turn-taking board game, a collaborative building game, and a music-and-movement game.

**Objectives:**

- Sustain focus and concentration.
- Simple verbal responses to the peer.
- Strengthen turn-taking and sharing skills.

There will be Music Therapy and Speech Therapy groups included in this group.

**Week 3 [27<sup>th</sup> July (Mon) to 31<sup>st</sup> July (Fri)]**

Code 編號	Course 課程名稱	Date 日期	Time 時間	Place 地點	No. of Session 節數	Size 人數	Language 語言	Pre-requisite 參加者能力要求	Fees 費用		Instructor 導師
									Current Watchdog EETC Student 現就讀監護者早期教育及訓練中心課程學生	Others (OPRS and Saturday students inclusive) 其他 (包括到校服務及星期六自費服務學生)	
HKG-10	Colourful World	27 July (Mon) To 31 July (Fri)	9:00 am To 11:00 am	Yellow Room	5	MAX 6	English	<b>Chronological age:</b> 4.5 to 6 years old <b>Follow instructions:</b> 2-steps <b>Communication:</b> Speaks in short phrase <b>Sitting Tolerance:</b> Can remain seated for at least 10mins <b>Attention:</b> Can stay focused for 10mins	\$2,000 (\$400 x 5 sessions)	\$3,900 (\$780 x 5 sessions)	<b>Angel Lam</b> (Special Needs Teacher)  <b>Mung Man Zoen</b> (Music Therapist) *Music Therapy is sponsored by Community Chest  <b>Connie Ng</b> (Speech Therapist)

**Content:**

Our world is full of beautiful colours and let's appreciate and have fun with colours!

In this week, children can experience colours through music and movement, hands-on science experiments, cooking, and art activities. Other social games, such as colours hunt, rainbow race, and playing parachute games at our last day will surely be our highlights of the week!

Kindly help your children to wear a different colour of the day:

- Day 1: Wear something Red
- Day 2: Wear something Yellow
- Day 3: Wear something Green
- Day 4: Wear something Blue
- Day 5: Wear Rainbow Colors

**Objectives:**

- Following the 2-step instructions and game rules
- Enhance independence
- Increase attention skills and social skills
- Promote problem-solving skills
- Introduce the concept of teamwork

There will be Music Therapy and Speech Therapy groups included in this group.

**Week 3 [27<sup>th</sup> July (Mon) to 31<sup>st</sup> July (Fri)]**

Code 編號	Course 課程名稱	Time 時間	Place 地點	No. of Session 節數	Size 人數	Language 語言	Pre-requisite 參加者能力要求	Fees 費用		Instructor 導師
								Current Watchdog EETC Student 現就讀監護者早期教育及訓練中心課程學生	Others (OPRS and Saturday students inclusive) 其他 (包括到校服務及星期六自費服務學生)	
HKG-11	The Science Explorer	2:30 pm To 4:30 pm	Yellow Room	5	Max 6	English	<b>Chronological age:</b> 3 to 4.5 years old <b>Follow instructions:</b> 2-steps <b>Communication:</b> Speaks in short phrase <b>Sitting Tolerance:</b> Can remain seated for at least 10mins <b>Attention:</b> Can stay focused for 10mins	\$2,000 (\$400 x 5 sessions)	\$3,900 (\$780 x 5 sessions)	<b>Cherry Kwok</b> (Special Needs Teacher)  <b>Crystal Lee</b> (Music Therapist) *Music Therapy is sponsored by Community Chest  <b>Cindy Chan</b> (Speech Therapist)

**Objectives:**

- Encourage curiosity by engaging participants in hands-on science activities
- Enhance communication skills through group discussions and sharing
- Encourage social interaction by facilitate teamwork and collaboration through experiments
- Develop attention skills during structured activities and short-duration tasks

**Content:**

We will explore fun and stimulating experiments including:

- Simple hands-on experiments
- Art and science
- Sensory activities
- Nature exploration

There will be Music Therapy and Speech Therapy groups included in this group.

**Week 3 [27<sup>th</sup> July (Mon) to 31<sup>st</sup> July (Fri)]**

Code 編號	Course 課程名稱	Time 時間	Place 地點	No. of Session 節數	Size 人數	Language 語言	Pre-requisite 參加者能力要求	Fees 費用		Instructor 導師
								Current Watchdog EETC Student 現就讀監護者早期教育及訓練中心課程學生	Others (OPRS and Saturday students inclusive) 其他 (包括到校服務及星期六自費服務學生)	
HKG-12	與你童遊	2:30 pm To 4:30 pm	藍班房	5	Max 6	廣東話	參加者能力要求： <ul style="list-style-type: none"> <li>• 年齡（按實際年齡）：4.5 至 6 歲</li> <li>• 執行指令：可跟從 2 - 3 步指令</li> <li>• 溝通能力：能以句子表達</li> <li>• 坐姿耐性：可保持坐姿至少 15 分鐘</li> <li>• 專注能力：可專注約 15 分鐘</li> <li>• 能提供簡單的解決方案</li> <li>• 能指出自己的/他人的情緒，並說出原因</li> </ul>	\$2,000 (\$400 x 5 sessions)	\$3,900 (\$780 x 5 sessions)	何老師 (特殊教育老師)  Crystal 姐姐 (音樂治療師) *公益金贊助本中心的音樂治療師服務  伍姑娘 (言語治療師)

**目標：**

- 學習遊戲的規則、等待輪候、策略和合作性，並訓練幼兒嘗試以代入他人的想法作高層次思考
- 增強聆聽能力、互相合作、自我控制、抽象思維及如何運用語言表達自己的想法、重述程序，並學習處理勝負的適當態度

**內容：**

透過參與不同的各類桌面遊戲(棋類、咭類遊戲)、合作性遊戲及集體的社交遊戲(音樂椅、狐狸先生幾點鐘等...) 從中學習，讓他們享受遊戲的樂趣。

此小組將提供言語治療及音樂治療之小組訓練



## Overview of Individual Training

Code 編號	Course 課程名稱	Instructor 導師	Language 語言	Fees 費用		Please click the code for more details 詳情請點擊 以下編號鏈接
				Current Watchdog EETC Programme Student  現就讀監護者早期教育及訓練中心 課程學生	Others (OPRS and Saturday students inclusive)  其他 (包括到校服務及星期六自費服務 學生)	
HK – AL	Special Needs Teacher Individual Training	Angel Lam (Special Needs Teacher)	English	\$500 English	\$680 English	<a href="#">HK - AL</a>
HK – SY	Special Needs Teacher Individual Training 特殊教育老師 個別訓練	Shirley Yang (Special Needs Teacher) 楊老師 (特殊教育老師)	English/ 廣東話	\$500 English/ 廣東話	\$680 English/ 廣東話	<a href="#">HK - SY</a>
HK – GH	特殊教育老師 個別訓練	何老師 (特殊教育老師)	廣東話	\$500 廣東話	\$680 廣東話	<a href="#">HK - GH</a>
HK – CK	Special Needs Teacher Individual Training	Cherry Kwok (Special Needs Teacher)	English	\$500 English	\$680 English	<a href="#">HK - CK</a>
HK – DS	Speech Therapy Individual Training 言語治療師 個別訓練	Dorene Sin (Speech Therapist) 冼姑娘 (言語治療師)	English/ 廣東話	\$730 English / 廣東話	\$1000 English / 廣東話	<a href="#">HK - DS</a>
HK – JN	Speech Therapy Individual Training 言語治療師 個別訓練	Jacqueline Ng (Speech Therapist) 伍姑娘 (言語治療師)	English/ 廣東話	\$730 English / 廣東話	\$900 English / 廣東話	<a href="#">HK - JN</a>
HK – CC	Speech Therapy Individual Training	Cindy Chan (Speech Therapist)	English	\$730 English		<a href="#">HK - CC</a>
HK – CN	Speech Therapy Individual Training	Connie Ng (Speech Therapist) 吳姑娘 (言語治療師)	English/ 廣東話	\$730 English / 廣東話		<a href="#">HK - CN</a>
HK – IT	Physiotherapy Individual Training 物理治療 個別訓練	Irene To (Physiotherapist) 杜姑娘 (物理治療師)	English/ 廣東話	\$730 English / 廣東話		<a href="#">HK - IT</a>
HK – TY	Occupational Therapy Individual Training 職業治療 個別訓練	Theresa Yue (Occupation Therapist) 俞姑娘 (職業治療師)	English/ 廣東話	\$730 English / 廣東話	\$1000 English / 廣東話	<a href="#">HK - TY</a>
HK – NS	Occupational Therapy Individual Training 職業治療 個別訓練	Nicole Sin (Occupation Therapist) 冼姑娘 (職業治療師)	English/ 廣東話	\$730 English / 廣東話		<a href="#">HK - NS</a>

## Special Needs Teacher Individual Training/特殊教育老師 個別訓練 (Page 1)



Objectives & content: Through teaching of pre-school concepts, listening skills, memory skills, and problem-solving skills to enhance the child's learning abilities.

訓練目標及內容：為兒童提供學前認知概念、聆聽、專注、記憶及解難等策略訓練，以提升兒童的學習能力。

Popular topics to work on: Improving on- task attention, self- management, understanding classroom routines, emotion regulation (calming strategies); etc...

Code 編號	Course 課程名稱	Instructor 導師	Place 地點	Language 語言	Fees 費用		Remarks 備註
					Current Watchdog EETC Programme Student 現就讀監護者早期教育及訓練中心課程學生	Others (OPRS and Saturday students inclusive) 其他 (包括到校服務及星期六自費服務學生)	
HK- AL	<b>Special Needs Teacher Training (Individual Session)</b>	Angel Lam (Special Needs Teacher)	HKC	English	\$500 English	\$680 English	Current Watchdog students will have priority for sign-up.

Monday 星期一		Tuesday 星期二		Wednesday 星期三		Thursday 星期四		Friday 星期五	
Date 日期	Time 時間	Date 日期	Time 時間	Date 日期	Time 時間	Date 日期	Time 時間	Date 日期	Time 時間
	N/A	14/7	1:15- 2:00 pm 2:15- 3:00 pm 3:15- 4:00 pm	15/7	1:15- 2:00 pm 2:15- 3:00 pm 3:15- 4:00 pm	16/7	1:15- 2:00 pm 2:15- 3:00 pm 3:15- 4:00 pm	17/7	1:15- 2:00 pm 2:15- 3:00 pm 3:15- 4:00 pm
20/7	9:00- 9:45 am 10:00- 10:45 am 11:00- 11:45 am	21/7	9:00- 9:45 am 10:00- 10:45 am 11:00- 11:45 am	22/7	9:00- 9:45 am 10:00- 10:45 am 11:00- 11:45 am	23/7	9:00- 9:45 am 10:00- 10:45 am 11:00- 11:45 am	24/7	9:00- 9:45 am 10:00- 10:45 am 11:00- 11:45 am
27/7	1:15- 2:00 pm 2:15- 3:00 pm 3:15- 4:00 pm	28/7	1:15- 2:00 pm 2:15- 3:00 pm 3:15- 4:00 pm	29/7	1:15- 2:00 pm 2:15- 3:00 pm 3:15- 4:00 pm	30/7	1:15- 2:00 pm 2:15- 3:00 pm 3:15- 4:00 pm	31/7	1:15- 2:00 pm 2:15- 3:00 pm 3:15- 4:00 pm

Special Needs Teacher Individual Training/特殊教育老師 個別訓練 (Page 2)

Code 編號	Course 課程名稱	Instructor 導師	Place 地點	Language 語言	Fees 費用		Remarks 備註
					Current Watchdog EETC Programme Student 現就讀監護者早期教育及訓練中心課程學生	Others (OPRS and Saturday students inclusive) 其他 (包括到校服務及星期六自費服務學生)	
HK- SY	<b>Special Needs Teacher Training (Individual Session)</b>  特殊教育老師 個別訓練	Shirley Yang (Special Needs Teacher)  楊老師 (特殊教育老師)	HKC	English / 廣東話	\$500 English / 廣東話	\$680 English / 廣東話	Current Watchdog students will have priority for sign-up.

Monday 星期一		Tuesday 星期二		Wednesday 星期三		Thursday 星期四		Friday 星期五	
Date 日期	Time 時間	Date 日期	Time 時間	Date 日期	Time 時間	Date 日期	Time 時間	Date 日期	Time 時間
	N/A	14/7	9:00- 9:45 am 10:00- 10:45 am 11:00- 11:45 am	15/7	9:00- 9:45 am 10:00- 10:45 am 11:00- 11:45 am	16/7	9:00- 9:45 am 10:00- 10:45 am 11:00- 11:45 am	17/7	9:00- 9:45 am 10:00- 10:45 am 11:00- 11:45 am
20/7	1:15- 2:00 pm 2:15- 3:00 pm 3:15- 4:00 pm	21/7	1:15- 2:00 pm 2:15- 3:00 pm 3:15- 4:00 pm	22/7	1:15- 2:00 pm 2:15- 3:00 pm 3:15- 4:00 pm	23/7	1:15- 2:00 pm 2:15- 3:00 pm 3:15- 4:00 pm	24/7	1:15- 2:00 pm 2:15- 3:00 pm 3:15- 4:00 pm
27/7	1:15- 2:00 pm 2:15- 3:00 pm 3:15- 4:00 pm	28/7	1:15- 2:00 pm 2:15- 3:00 pm 3:15- 4:00 pm	29/7	1:15- 2:00 pm 2:15- 3:00 pm 3:15- 4:00 pm	30/7	1:15- 2:00 pm 2:15- 3:00 pm 3:15- 4:00 pm	31/7	1:15- 2:00 pm 2:15- 3:00 pm 3:15- 4:00 pm



Special Needs Teacher Individual Training/特殊教育老師訓練 (Page 3)

Code 編號	Course 課程名稱	Instructor 導師	Place 地點	Language 語言	Fees 費用		Remarks 備註
					Current Watchdog EETC Programme Student 現就讀監護者早期教育及訓練中心課程學生	Others (OPRS and Saturday students inclusive) 其他 (包括到校服務及星期六自費服務學生)	
HK - GH	特殊教育老師 個別訓練	何老師 (特殊教育老師)	HKC	廣東話	\$500 廣東話	\$680 廣東話	Current Watchdog students will have priority for sign-up.

Monday 星期一		Tuesday 星期二		Wednesday 星期三		Thursday 星期四		Friday 星期五	
Date 日期	Time 時間	Date 日期	Time 時間	Date 日期	Time 時間	Date 日期	Time 時間	Date 日期	Time 時間
	N/A	14/7	1:15- 2:00 pm 2:15- 3:00 pm 3:15- 4:00 pm	15/7	1:15- 2:00 pm 2:15- 3:00 pm 3:15- 4:00 pm	16/7	1:15- 2:00 pm 2:15- 3:00 pm 3:15- 4:00 pm	17/7	1:15- 2:00 pm 2:15- 3:00 pm 3:15- 4:00 pm
20/7	9:00- 9:45 am 10:00- 10:45 am 11:00- 11:45 am	21/7	9:00- 9:45 am 10:00- 10:45 am 11:00- 11:45 am	22/7	9:00- 9:45 am 10:00- 10:45 am 11:00- 11:45 am	23/7	9:00- 9:45 am 10:00- 10:45 am 11:00- 11:45 am	24/7	9:00- 9:45 am 10:00- 10:45 am 11:00- 11:45 am
27/7	9:00- 9:45 am 10:00- 10:45 am 11:00- 11:45 am	28/7	9:00- 9:45 am 10:00- 10:45 am 11:00- 11:45 am	29/7	9:00- 9:45 am 10:00- 10:45 am 11:00- 11:45 am	30/7	9:00- 9:45 am 10:00- 10:45 am 11:00- 11:45 am	31/7	9:00- 9:45 am 10:00- 10:45 am 11:00- 11:45 am



### Special Needs Teacher Individual Training/特殊教育老師 個別訓練 (Page 4)

Code 編號	Course 課程名稱	Instructor 導師	Place 地點	Language 語言	Fees 費用		Remarks 備註
					Current Watchdog EETC Programme Student  現就讀監護者早期教育及訓練中心課程學生	Others (OPRS and Saturday students inclusive)  其他 (包括到校服務及星期六自費服務學生)	
HK- CK	Special Needs Teacher Training (Individual Session)	Cherry Kwok (Special Needs Teacher)	HKC	English	\$500 English	\$680 English	Current Watchdog students will have priority for sign-up.

Monday 星期一		Tuesday 星期二		Wednesday 星期三		Thursday 星期四		Friday 星期五	
Date 日期	Time 時間	Date 日期	Time 時間	Date 日期	Time 時間	Date 日期	Time 時間	Date 日期	Time 時間
	N/A	14/7	9:00- 9:45 am 10:00- 10:45 am 11:00- 11:45 am	15/7	9:00- 9:45 am 10:00- 10:45 am 11:00- 11:45 am	16/7	9:00- 9:45 am 10:00- 10:45 am 11:00- 11:45 am	17/7	9:00- 9:45 am 10:00- 10:45 am 11:00- 11:45 am
20/7	1:15- 2:00 pm 2:15- 3:00 pm 3:15- 4:00 pm	21/7	1:15- 2:00 pm 2:15- 3:00 pm 3:15- 4:00 pm	22/7	1:15- 2:00 pm 2:15- 3:00 pm 3:15- 4:00 pm	23/7	1:15- 2:00 pm 2:15- 3:00 pm 3:15- 4:00 pm	24/7	1:15- 2:00 pm 2:15- 3:00 pm 3:15- 4:00 pm
27/7	9:00- 9:45 am 10:00- 10:45 am 11:00- 11:45 am	28/7	9:00- 9:45 am 10:00- 10:45 am 11:00- 11:45 am	29/7	9:00- 9:45 am 10:00- 10:45 am 11:00- 11:45 am	30/7	9:00- 9:45 am 10:00- 10:45 am 11:00- 11:45 am	31/7	9:00- 9:45 am 10:00- 10:45 am 11:00- 11:45 am



Speech Therapy Individual Training/ 言語治療 個別訓練 (Page 1)

Code 編號	Course 課程名稱	Instructor 導師	Place 地點	Language 語言	Fees 費用		Remarks 備註
					Current Watchdog EETC Programme Student 現就讀監護者早期教育及訓練中心課程學生	Others (OPRS and Saturday students inclusive) 其他 (包括到校服務及星期六自費服務學生)	
HK - DS	Speech Therapy (Individual Session) 言語治療 個別訓練	Dorene Sin (Speech Therapist) 冼姑娘 (言語治療師)	HKC	Eng / 廣東話	\$730 English / 廣東話	\$1000 English / 廣東話	Current Watchdog students will have priority for sign-up.

Monday 星期一		Tuesday 星期二		Wednesday 星期三		Thursday 星期四		Friday 星期五	
Date 日期	Time 時間	Date 日期	Time 時間	Date 日期	Time 時間	Date 日期	Time 時間	Date 日期	Time 時間
	N/A	14/7	N/A	15/7	9:00-9:45am 10:00-10:45am 11:00-11:45am  1:15-2:00pm 2:15-3:00pm 3:15-4:00pm	16/7	N/A	17/7	N/A
20/7	N/A	21/7	N/A	22/7	9:00-9:45am 10:00-10:45am 11:00-11:45am  1:15-2:00pm 2:15-3:00pm 3:15-4:00pm	23/7	N/A	24/7	N/A
27/7	N/A	28/7	N/A	29/7	9:00-9:45am 10:00-10:45am 11:00-11:45am  1:15-2:00pm 2:15-3:00pm 3:15-4:00pm	30/7	N/A	31/7	N/A

Speech Therapy Individual Training/ 言語治療 個別訓練 (Page 2)

Code 編號	Course 課程名稱	Instructor 導師	Place 地點	Language 語言	Fees 費用		Remarks 備註
					Current Watchdog EETC Programme Student 現就讀監護者早期教育及訓練中心課程學生	Others (OPRS and Saturday students inclusive) 其他 (包括到校服務及星期六自費服務學生)	
HK - JN	Speech Therapy (Individual Session) 言語治療 個別訓練	Jacqueline Ng (Speech Therapist) 伍姑娘 (言語治療師)	HKC	English / 廣東話	\$730 English / 廣東話	\$900 English / 廣東話	Current Watchdog students will have priority for sign-up.

Monday 星期一		Tuesday 星期二		Wednesday 星期三		Thursday 星期四		Friday 星期五	
Date 日期	Time 時間	Date 日期	Time 時間	Date 日期	Time 時間	Date 日期	Time 時間	Date 日期	Time 時間
	N/A	14/7	9:00-9:45am 10:00-10:45am 11:00-11:45am  1:15-2:00pm	15/7	9:00-9:45am 10:00-10:45am 11:00-11:45am  4:15-5:00pm	16/7	9:00-9:45am 10:00-10:45am 11:00-11:45am  1:15-2:00pm	17/7	9:00-9:45am 10:00-10:45am 11:00-11:45am  1:15-2:00pm
20/7	1:15-2:00pm 2:15-3:00pm 3:15-4:00pm	21/7	1:15-2:00pm 2:15-3:00pm 3:15-4:00pm	22/7	1:15-2:00pm 2:15-3:00pm 3:15-4:00pm	23/7	1:15-2:00pm 2:15-3:00pm 3:15-4:00pm	24/7	1:15-2:00pm 2:15-3:00pm 3:15-4:00pm
27/7	9:00-9:45am 10:00-10:45am 11:00-11:45am  1:15-2:00pm	28/7	9:00-9:45am 10:00-10:45am 11:00-11:45am  1:15-2:00pm	29/7	9:00-9:45am 10:00-10:45am 11:00-11:45am  4:15-5:00pm	30/7	9:00-9:45am 10:00-10:45am 11:00-11:45am  1:15-2:00pm	31/7	9:00-9:45am 10:00-10:45am 11:00-11:45am  1:15-2:00pm



Speech Therapy Individual Training (Page 3)

Code 編號	Course 課程名稱	Instructor 導師	Place 地點	Language 語言	Fees 費用		Remarks 備註
					Current Watchdog EETC Programme Student 現就讀監護者早期教育及訓練中心課程學生	Others (OPRS and Saturday students inclusive) 其他 (包括到校服務及星期六自費服務學生)	
HK - CC	Speech Therapy (Individual Session)	Cindy Chan (Speech Therapist)	HKC	English	\$730 English / 廣東話		Current Watchdog students will have priority for sign-up.

Monday 星期一		Tuesday 星期二		Wednesday 星期三		Thursday 星期四		Friday 星期五	
Date 日期	Time 時間	Date 日期	Time 時間	Date 日期	Time 時間	Date 日期	Time 時間	Date 日期	Time 時間
	N/A	14/7	9:00-9:45am 10:00-10:45am 11:00-11:45am  1:15-2:00pm	15/7	9:00-9:45am 10:00-10:45am 11:00-11:45am  1:15-2:00pm	16/7	9:00-9:45am 10:00-10:45am 11:00-11:45am  1:15-2:00pm	17/7	9:00-9:45am 10:00-10:45am 11:00-11:45am  1:15-2:00pm
20/7	9:00-9:45am 10:00-10:45am 11:00-11:45am  1:15-2:00pm	21/7	9:00-9:45am 10:00-10:45am 11:00-11:45am  1:15-2:00pm	22/7	9:00-9:45am 10:00-10:45am 11:00-11:45am  1:15-2:00pm	23/7	9:00-9:45am 10:00-10:45am 11:00-11:45am  1:15-2:00pm	24/7	9:00-9:45am 10:00-10:45am 11:00-11:45am  1:15-2:00pm
27/7	9:00-9:45am 10:00-10:45am 11:00-11:45am  1:15-2:00pm	28/7	9:00-9:45am 10:00-10:45am 11:00-11:45am  1:15-2:00pm	29/7	9:00-9:45am 10:00-10:45am 11:00-11:45am  1:15-2:00pm	30/7	9:00-9:45am 10:00-10:45am 11:00-11:45am  1:15-2:00pm	31/7	9:00-9:45am 10:00-10:45am 11:00-11:45am  1:15-2:00pm





### Speech Therapy Individual Training (Page 4)

Code 編號	Course 課程名稱	Instructor 導師	Place 地點	Language 語言	Fees 費用		Remarks 備註
					Current Watchdog EETC Programme Student 現就讀監護者早期教育及訓練中心課程學生	Others (OPRS and Saturday students inclusive) 其他 (包括到校服務及星期六自費服務學生)	
HK - CN	Speech Therapy (Individual Session) 言語治療 個別訓練	Connie Ng (Speech Therapist) 吳姑娘 (言語治療師)	HKC	English / 廣東話	\$730 English / 廣東話		Current Watchdog students will have priority for sign-up.

Monday 星期一		Tuesday 星期二		Wednesday 星期三		Thursday 星期四		Friday 星期五	
Date 日期	Time 時間	Date 日期	Time 時間	Date 日期	Time 時間	Date 日期	Time 時間	Date 日期	Time 時間
	N/A	14/7	11:00- 11:45 am 1:15- 2:00pm 2:15- 3:00pm 3:15- 4:00pm	15/7	11:00- 11:45 am 1:15- 2:00pm 2:15- 3:00pm 3:15- 4:00pm	16/7	11:00- 11:45 am 1:15- 2:00pm 2:15- 3:00pm 3:15- 4:00pm	17/7	11:00- 11:45 am 1:15- 2:00pm 2:15- 3:00pm 3:15- 4:00pm
20/7	9:00-9:45am 10:00-10:45am 11:00-11:45am 1:15-2:00pm	21/7	9:00-9:45am 10:00-10:45am 11:00-11:45am 1:15-2:00pm	22/7	9:00-9:45am 10:00-10:45am 11:00-11:45am 4:15-5:00pm	23/7	9:00-9:45am 10:00-10:45am 11:00-11:45am 1:15-2:00pm	24/7	9:00-9:45am 10:00-10:45am 11:00-11:45am 1:15-2:00pm
27/7	1:15- 2:00pm 2:15- 3:00pm 3:15- 4:00pm	28/7	1:15- 2:00pm 2:15- 3:00pm 3:15- 4:00pm	29/7	1:15- 2:00pm 2:15- 3:00pm 3:15- 4:00pm	30/7	1:15- 2:00pm 2:15- 3:00pm 3:15- 4:00pm	31/7	1:15- 2:00pm 2:15- 3:00pm 3:15- 4:00pm



Physiotherapy Individual Training/ 物理治療 個別訓練

Code 編號	Course 課程名稱	Instructor 導師	Place 地點	Language 語言	Fees 費用		Remarks 備註
					Current Watchdog EETC Programme Student 現就讀監護者早期教育及訓練中心課程學生	Others (OPRS and Saturday students inclusive) 其他 (包括到校服務及星期六自費服務學生)	
HK- IT	<b>Physiotherapy (Individual Session)</b>  物理治療 個別訓練	Irene To (Physiotherapist)  杜姑娘 (物理治療師)	PT Room	English / 廣東話	\$730 English / 廣東話		Current Watchdog students will have priority for sign-up.

Monday 星期一		Tuesday 星期二		Wednesday 星期三		Thursday 星期四		Friday 星期五	
Date 日期	Time 時間	Date 日期	Time 時間	Date 日期	Time 時間	Date 日期	Time 時間	Date 日期	Time 時間
	N/A	14/7	9:00- 9:45 am 11:00- 11:45 am  1:15- 2:00 pm 2:15- 3:00 pm 3:15- 4:00 pm	15/7	9:00- 9:45 am 11:00- 11:45 am  1:15- 2:00 pm 2:15- 3:00 pm 3:15- 4:00 pm	16/7	9:00- 9:45 am 11:00- 11:45 am  1:15- 2:00 pm 2:15- 3:00 pm 3:15- 4:00 pm	17/7	N/A
20/7	N/A	21/7	9:00- 9:45 am 10:00- 10:45 am 11:00- 11:45 am  1:15- 2:00 pm 2:15- 3:00 pm 3:15- 4:00 pm	22/7	9:00- 9:45 am 10:00- 10:45 am 11:00- 11:45 am  1:15- 2:00 pm 2:15- 3:00 pm 3:15- 4:00 pm	23/7	9:00- 9:45 am 10:00- 10:45 am 11:00- 11:45 am  1:15- 2:00 pm 2:15- 3:00 pm 3:15- 4:00 pm	24/7	N/A
27/7	N/A	28/7	9:00- 9:45 am 10:00- 10:45 am 11:00- 11:45 am  1:15- 2:00 pm 2:15- 3:00 pm 3:15- 4:00 pm	29/7	9:00- 9:45 am 10:00- 10:45 am 11:00- 11:45 am  1:15- 2:00 pm 2:15- 3:00 pm 3:15- 4:00 pm	30/7	9:00- 9:45 am 10:00- 10:45 am 11:00- 11:45 am  1:15- 2:00 pm 2:15- 3:00 pm 3:15- 4:00 pm	31/7	N/A

Occupational Therapy Individual Training/ 職業治療 個別訓練 (Page 1)

Code 編號	Course 課程名稱	Instructor 導師	Place 地點	Language 語言	Fees 費用		Remarks 備註
					Current Watchdog EETC Programme Student 現就讀監護者早期教育及訓練中心課程學生	Others (OPRS and Saturday students inclusive) 其他 (包括到校服務及星期六自費服務學生)	
HK- TY	Occupational Therapy (Individual Session) 職業治療 個別訓練	Theresa Yue (Occupational Therapist) 俞姑娘 (職業治療師)	OT room	English / 廣東話	\$730 English / 廣東話	\$1000 English / 廣東話	Current Watchdog students will have priority for sign-up.

Monday 星期一		Tuesday 星期二		Wednesday 星期三		Thursday 星期四		Friday 星期五	
Date 日期	Time 時間	Date 日期	Time 時間	Date 日期	Time 時間	Date 日期	Time 時間	Date 日期	Time 時間
	N/A	14/7	9:00- 9:45 am 10:00- 10:45 am 11:00- 11:45 am  1:15- 2:00 pm 2:15- 3:00 pm 3:15- 4:00 pm	15/7	9:00- 9:45 am 10:00- 10:45 am 11:00- 11:45 am  1:15- 2:00 pm 2:15- 3:00 pm 3:15- 4:00 pm	16/7	9:00- 9:45 am 10:00- 10:45 am 11:00- 11:45 am	17/7	9:00- 9:45 am 10:00- 10:45 am 11:00- 11:45 am  1:15- 2:00 pm 2:15- 3:00 pm 3:15- 4:00 pm
20/7	9:00- 9:45 am 10:00- 10:45 am 11:00- 11:45 am  1:15- 2:00 pm 2:15- 3:00 pm 3:15- 4:00 pm	21/7	9:00- 9:45 am 10:00- 10:45 am 11:00- 11:45 am	22/7	9:00- 9:45 am 10:00- 10:45 am 11:00- 11:45 am  1:15- 2:00 pm 2:15- 3:00 pm 3:15- 4:00 pm	23/7	9:00- 9:45 am 10:00- 10:45 am 11:00- 11:45 am  1:15- 2:00 pm 2:15- 3:00 pm 3:15- 4:00 pm	24/7	9:00- 9:45 am 10:00- 10:45 am 11:00- 11:45 am  1:15- 2:00 pm 2:15- 3:00 pm 3:15- 4:00 pm
27/7	9:00- 9:45 am 10:00- 10:45 am 11:00- 11:45 am  1:15- 2:00 pm 2:15- 3:00 pm 3:15- 4:00 pm	28/7	9:00- 9:45 am 10:00- 10:45 am 11:00- 11:45 am  1:15- 2:00 pm 2:15- 3:00 pm 3:15- 4:00 pm	29/7	9:00- 9:45 am 10:00- 10:45 am 11:00- 11:45 am  1:15- 2:00 pm 2:15- 3:00 pm 3:15- 4:00 pm	30/7	9:00- 9:45 am 10:00- 10:45 am 11:00- 11:45 am  1:15- 2:00 pm 2:15- 3:00 pm 3:15- 4:00 pm	31/7	9:00- 9:45 am 10:00- 10:45 am 11:00- 11:45 am  1:15- 2:00 pm 2:15- 3:00 pm 3:15- 4:00 pm



### Occupational Therapy Individual Training/ 職業治療 個別訓練 (Page 2)

Code 編號	Course 課程名稱	Instructor 導師	Place 地點	Language 語言	Fees 費用		Remarks 備註
					Current Watchdog EETC Programme Student 現就讀監護者早期教育及訓練中心課程學生	Others (OPRS and Saturday students inclusive) 其他 (包括到校服務及星期六自費服務學生)	
HK- NS	<b>Occupational Therapy (Individual Session)</b>  職業治療 個別訓練	Nicole Sin (Occupational Therapist)  冼姑娘 (職業治療師)	OT room	English / 廣東話	\$730 English / 廣東話		Current Watchdog students will have priority for sign-up.

Monday 星期一		Tuesday 星期二		Wednesday 星期三		Thursday 星期四		Friday 星期五	
Date 日期	Time 時間	Date 日期	Time 時間	Date 日期	Time 時間	Date 日期	Time 時間	Date 日期	Time 時間
N/A		14/7	9:00- 9:45 am 10:00- 10:45 am 11:00- 11:45 am  1:15- 2:00 pm 2:15- 3:00 pm 3:15- 4:00 pm	15/7	9:00- 9:45 am 10:00- 10:45 am 11:00- 11:45 am  1:15- 2:00 pm 2:15- 3:00 pm 3:15- 4:00 pm	16/7	9:00- 9:45 am 10:00- 10:45 am 11:00- 11:45 am  1:15- 2:00 pm 2:15- 3:00 pm 3:15- 4:00 pm	17/7	9:00- 9:45 am 10:00- 10:45 am 11:00- 11:45 am  1:15- 2:00 pm 2:15- 3:00 pm 3:15- 4:00 pm
20/7	N/A	21/7	9:00- 9:45 am 10:00- 10:45 am 11:00- 11:45 am  1:15- 2:00 pm 2:15- 3:00 pm 3:15- 4:00 pm	22/7	9:00- 9:45 am 10:00- 10:45 am 11:00- 11:45 am  1:15- 2:00 pm 2:15- 3:00 pm 3:15- 4:00 pm	23/7	9:00- 9:45 am 10:00- 10:45 am 11:00- 11:45 am  1:15- 2:00 pm 2:15- 3:00 pm 3:15- 4:00 pm	24/7	9:00- 9:45 am 10:00- 10:45 am 11:00- 11:45 am  1:15- 2:00 pm 2:15- 3:00 pm 3:15- 4:00 pm
27/7	N/A	28/7	9:00- 9:45 am 10:00- 10:45 am 11:00- 11:45 am  1:15- 2:00 pm 2:15- 3:00 pm 3:15- 4:00 pm	29/7	9:00- 9:45 am 10:00- 10:45 am 11:00- 11:45 am  1:15- 2:00 pm 2:15- 3:00 pm 3:15- 4:00 pm	30/7	9:00- 9:45 am 10:00- 10:45 am 11:00- 11:45 am  1:15- 2:00 pm 2:15- 3:00 pm 3:15- 4:00 pm	31/7	9:00- 9:45 am 10:00- 10:45 am 11:00- 11:45 am  1:15- 2:00 pm 2:15- 3:00 pm 3:15- 4:00 pm

## REGISTRATION 報名

- To register, please fill in the online application form by scanning the below QR code. For non-Watchdog parents, please email the relevant admission form to Ms. Ophelia Tsang (Social Worker) via [opheliatsang@watchdog.org.hk](mailto:opheliatsang@watchdog.org.hk)
- For Successful Enrollment: Parents will receive a confirmation email together with an invoice. **Please settle the fees by bank-in and send the bank-in information within 7 days upon confirmation.**
- After 7 days if no payment is received, your place will be given to the others on the waiting list.
- All Fees are Non- Refundable.

### PRIORITY:

- For all sessions of a certain group
- Regular Watchdog students will have priority for the program

**FIRST COME FIRST SERVED**

Please scan this QR code for the online application form:



**(EETC) Open for application: May 4, 2026; (Other programs) Open for application: May 11, 2026**

**Application Deadline: May 29, 2026**

## REGISTRATION 報名

- 有興趣報名者，請掃描以下二維碼填妥網上參加表格。如非監護者家長，請另外填妥入學申請表，再用電郵傳送給香港中心社工 曾姑娘。電郵：[opheliatsang@watchdog.org.hk](mailto:opheliatsang@watchdog.org.hk) 電話：2521- 7364 傳真：2522-0734
- 成功申請者將收到確認電郵及發票 (請於電郵通知後的七天內於銀行轉帳，並將轉帳紀錄交予香港中心)

[七天後如未收到有關款項，空缺將由候補名單代替]

一切繳交費用將不獲退還

優先取錄資格:

- 參加整個課程(小組)者
- 現正接受本機構服務之兒童

報名請掃描此二維碼：



先到先得，額滿即止



(早期教育及訓練中心課程) 開放報名日期：2026年5月4日；(其他課程) 開放報名日期：2026年5月11日

截止報名日期: 2026年5月29日

## FEE INFORMATION 收費資料

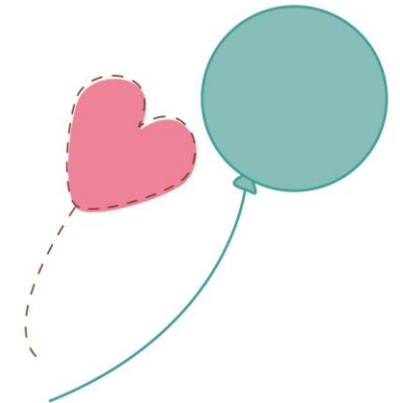
### \*FOR CURRENT WATCHDOG EETC STUDENT 現就讀監護者早期教育及訓練中心課程學生

- Current children 現就讀學生
- Those who have confirmed the enrollment status in the Sept 2026 enrollment 適用於已確認 9 月 2026 年入讀的學生

### \*FOR EETC (FEE REMISSION) CHILDREN 早期教育及訓練中心課程(學費減免)兒童

#### \*優惠限於：

- ONE GROUP PROGRAMME (TEACHER/ST/OT/PT GROUP) 一個小組課程(老師/職業治療/言語治療/物理治療小組)
- ONE INDIVIDUAL SPEECH THERAPY SESSION PER WEEK 每周一節言語治療訓練
- ONE INDIVIDUAL OCCUPATIONAL THERAPY SESSION PER WEEK 每周一節職業治療訓練
- ONE INDIVIDUAL SPECIAL NEEDS TEACHER SESSION PER WEEK 每周一節特殊教育老師訓練
- ONE INDIVIDUAL PHYSIOTHERAPY SESSION PER WEEK 每周一節物理治療訓練



### “OTHER STUDENTS” INCLUDE THE FOLLOWING CATEGORY 屬於“其他學生”的類別

- PRIVATE SATURDAY PROGRAMME STUDENT 星期六自費課程學生
- EX-WATCHDOG PROGRAMME STUDENT 監護者舊生
- NON-WATCHDOG STUDENT 非監護者學生
- TSP (TRAINING SUBSIDY PROGRAM) STUDENT 學習訓練津貼項目學生
- OPRS (ON-SITE PRE-SCHOOL REHABILITATION SERVICE) STUDENT 到校學前康復服務計劃學生
- SELF-FINANCED PACKAGE PROGRAMME STUDENT 自費全方位學前訓練學生

## RULES FOR MAKE-UP AND CANCELLATION OF SESSIONS 補課及取消課堂指引

### **Group Sessions 小組訓練**

NO make-up or refund can be provided (including sick leave/cancellation due to bad weather)

不設補課或退款(包括病假及因天氣原故取消課堂)

### **Individual Sessions 個別訓練**

Re-arrangement of sessions (subject to vacancies) or refund will be provided for paid sessions based on the criteria stated below:

自費訓練將根據下列有關條款作出調堂 (如有空缺) 或退款:

- Teacher / therapist sick or away 老師 / 治療師病假或事假
  
- Child takes sick leave 學童病假
  1. MUST notify the center before 9:00am PLUS a medical certificate, otherwise, no make-up & no refund 必須於早上 9:00 前通知本中心及後補醫生紙
  2. Medical Certificate must be submitted within 7 days after child has taken sick leave. Valid medical certificate should be issued on the day of the sick leave or for a maximum of 3 days before or after the sick leave.  
必須於 7 日內提交有效之醫生紙，醫生紙須為病假當日或病假前/後三日內發出
  
- Cancellation due to weather condition 因惡劣天氣取消課程

Cancellation due to weather conditions (e.g. typhoon No. 3 or 8 and Red/Black Storm Warning), session will be made up or refunded.

若因天氣緣故取消課堂 (例如:3 或 8 號颱風、紅色或黑色暴雨)，將獲補堂或退款。

All refunds will be proceeded after completion of the summer program. 所有退款需待暑期活動結束後才進行

*Thank you*

The text "Thank you" is written in a black, cursive script. Below the text is a decorative underline consisting of two overlapping, curved lines in a gold or light brown color.